



# Legacy Giving Information

---

## Thank you for your interest in leaving a legacy for Childhood Cancer Research!

Legacy donors are those who have chosen to change the lives of kids with cancer by including a gift to the St. Baldrick's Foundation in their will or estate plan. These special legacy gifts take many forms, but they all represent hope for childhood cancer patients and their loved ones.

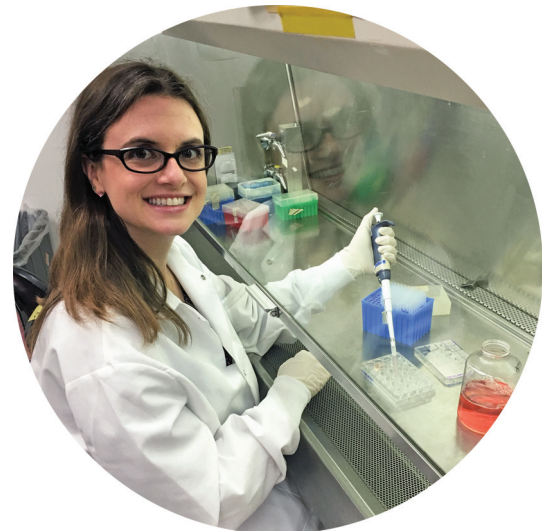
### How Legacy Gifts Make a Difference

With the help of your generous gift, we take a step forward against childhood cancers every day. Since 2005, the St. Baldrick's Foundation has devoted more than \$340 million to childhood cancer research. With the help of our supporters, the St. Baldrick's Foundation has funded the most promising research resulting in many important discoveries and a better understanding of childhood cancer to create less toxic treatments for our kids.

### Why We Need You

The need is still great. Childhood cancers are very different from adult cancers. While the National Cancer Institute has nearly doubled its investment in childhood cancer research in recent years due to greater advocacy and awareness, more research funding is needed to develop new, safe therapies for kids with cancer. These kids are counting on us – and you – to help them beat the disease.

By including St. Baldrick's in your estate plan, you will establish a personal legacy that impacts the lives of kids fighting childhood cancer and their families. And we think that is a pretty amazing gift!



Dr. Melissa Mavers,  
St. Baldrick's Fellow Grant Recipient,  
Stanford University

### How to Make a Legacy Gift

- Our official name: St. Baldrick's Foundation
- Our mailing address: 1333 S. Mayflower Avenue, Suite 400,  
Monrovia, CA 91016
- Our telephone number: (626) 792-8247 or 888-899-BALD
- Our identification: A not-for-profit organization under Section 501(c)(3) of the Internal Revenue Code
- Our tax-exempt number: 20-1173824

## Sample Language

Below are examples of copy that can be included in your will or estate plan. Talk with your lawyer or representative to discuss what language is most appropriate for your circumstances:

*“I give, devise and bequeath to the St. Baldrick’s Foundation for its general research purposes [state fraction or percentage of the rest, residue and remainder] in my estate, both, real or personal.”*

OR

*“I give and bequeath to the St. Baldrick’s Foundation the sum of \$\_\_\_\_\_ to be used for the general research purposes of the Foundation.”*

To include a bequest solely for a specific type of childhood cancer research, have your attorney include the following or a similar paragraph in your will:

*“I hereby give, devise and bequeath to the St. Baldrick’s Foundation [whatever amount or percentage you so desire]. The use of this bequest is restricted to funding childhood cancer research grants for the specific diseases of [insert disease type], as approved by the St. Baldrick’s Foundation’s Board and Scientific Advisory Committee.”*

## Next Steps

We’d be honored to acknowledgment your generous commitment in our legacy society, **The Emerald Circle**. It would also be helpful for the Foundation to have a copy of your will/estate plan once completed (the section related to your gift to us is ideal). Or, you may complete a [Legacy Gift Commitment form](#) downloadable from our website. We will keep your information confidential and will discuss your communications and recognition preferences with you to ensure we respect your wishes.

## Thank you again for considering a legacy gift!

For additional information, please contact:

Susan Heard  
Senior Director of Distinguished Giving  
Phone: 626-792-8247 ext. 218  
Email: [Susan@StBaldricks.org](mailto:Susan@StBaldricks.org)  
Fax: 626-775-3046



Kellan, at age 5,  
Neuroblastoma  
NED with permanent paralysis